

## Itinerary Options

### **TABASCO® Factory & Country Store**

6228 Avery Island Rd., New Iberia, LA 70560

800-634-9599 • [TABASCO.com](http://TABASCO.com)

By reservation for groups; allow: 1.5-2 hour(s); self-guided – guide, French tours and cooking classes available by reservation

See the factory where TABASCO® brand pepper sauce is made. View artifacts from TABASCO®'s founding family at the **TABASCO® museum**; witness the growing process of the pepper plants from seedlings to full-grown plants; visit the mash warehouse for a peek at the sauce's aging process; view and smell the aromas of the stirring vats; and learn about the company's bottling and shipping process around the world. Sample new food and check out a wide array of branded products and souvenirs for sale at the **TABASCO® Country Store**. Take a **food tour** to experience Cajun food and culture at different local establishments. Savor TABASCO®-infused dishes at **1868**, a cottage-style restaurant featuring a diverse menu including pepper barrel crawfish etouffée, pepper jelly boudin, Avery Island red beans and rice, and much more.



### **Jungle Gardens of Avery Island**

6164 Avery Island Rd., New Iberia, LA 70560

337-369-6243 • [JungleGardens.org](http://JungleGardens.org)

By reservation for groups; allow: 1-2 hour(s); Self-guided - mobile tour in French and English - guided bird tours and French tours by reservation

Edward Avery (“Ned”) McIlhenny, the son of TABASCO® inventor Edmund Avery McIlhenny, converted his private Avery Island estate into Jungle Gardens, decorating it with exotic botanical specimens from around the world. He also founded **Bird City**, a private bird sanctuary for the once-endangered snowy egret. Camellias, azaleas, bamboos and thousands of tropical plants in season form a beautiful landscape. A centuries-old **Buddha** sculpture watches over the Chinese Garden. Alligators prowl in the lagoon and bayou. Deer, rabbits and enormous flocks of egrets and herons, among other species, are protected here and may be seen in early spring and summer. Ducks and other wild fowl inhabit the gardens in winter. Jungle Gardens/Tabasco packages and bike rentals available.



### **Conrad Rice Mill, KONRIKO® Company Store**

307 Ann St., New Iberia, LA 70560

800-551-3245 • [ConradRice.com](http://ConradRice.com)

By reservation for groups; allow: 1 hour; guide available - French tours by reservation

Enjoy the charm of a bygone era and genuine Cajun hospitality at the historic Conrad Rice Mill, built in 1912. The mill is America’s **oldest operating rice mill** and a rare surviving example of a factory using a turn-of-the-century belt-driven power transmission. A substantial portion of the mill’s original equipment is still in use today. See a slide presentation on the history of the Acadians and tour the mill. Shop at the **KONRIKO® Company Store**, which offers rice from the mill, local seasoning products, as well as other food items, cookbooks, crafts, music and souvenirs from Cajun Country. Free samples available.



## Shadows-on-the-Teche

317 E. Main St., New Iberia, LA 70560

877-200-4924 • [ShadowsOnTheTeche.org](http://ShadowsOnTheTeche.org)

By reservation for groups; allow: 1 hour; guide available – French tours by reservation



Located in the **New Iberia National Register Historic District** and set among towering live oak trees draped with Spanish moss on the banks of Bayou Teche, the Shadows, built in 1834 for sugar planter David Weeks, paints a vivid picture of life for the four generations that made this property their home. The first **National Trust for Historic Preservation site** in the Gulf South, the Shadows is a Classic Revival-style home with a Louisiana Colonial floor plan and a garden that is as breathtaking as the history preserved here. This unique architectural treasure is filled with original furnishings, textiles, paintings, books and toys. Celebrities such as Walt Disney, Cecil B. DeMille, and Tex Ritter have all been guests at the Shadows-on-the-Teche. Yearly events include arts and crafts fairs and Plein Air artist competition. Hands-on activities available by reservation for student groups to learn about life in the 19th century.

## New Iberia National Register Historic District Trail

Century-old oaks surround stately homes in the National Register **Residential District**. The **Commercial District** won the 2005 **Great American Main Street Award®** sponsored by the National Trust for Historic Preservation®. The historic district follows the course of Bayou Teche and features structures built between the 1820s and 1940s. Experience the setting captured in the famed **Detective Dave Robicheaux shown Rip's** novels of New Iberia native and award-winning author James Lee Burke. Interpretive kiosks and multilingual historical markers tell the city's story at select locations. Self-guided walking tour maps available.



## Bayou Teche Museum

131 E. Main St., New Iberia, LA 70560

337-606-5977 • [BayouTecheMuseum.org](http://BayouTecheMuseum.org)

By reservation for groups; allow: 1 hour; guide available – French tours by reservation



Step into the Bayou Teche Museum to explore the **Teche Area**, one of the country's most colorful, bountiful and historically significant regions. Fun for the whole family, interactive exhibits showcase the spicy blend of cultures, artists, industries and lore that sprang from the land surrounding the snake-like curves of the peaceful South Louisiana bayou. The museum includes a **Dave Robicheaux** exhibit, a permanent **George Rodrigue** exhibit and plans are underway for a park to honor the artist's memory. The museum is located on New Iberia's award-winning Main Street, the captivating setting captured in the Robicheaux novels of celebrated author James Lee Burke, just two blocks from beautiful Shadows-on-the-Teche and minutes from Conrad Rice Mill, America's oldest operating rice mill.

### James Lee Burke's Iberia

As a boy, award-winning author James Lee Burke spent his summers with relatives in New Iberia. Burke says his favorite place in town is Main Street, where his grandfather once lived. Burke's famed Detective Dave Robicheaux crime novels are set in the area he enjoyed as a child. They give readers a glimpse of the region's fascinating landscape, heritage, hospitality and history. Explore Dave Robicheaux's haunts and experience actual sites depicted in Burke's novels. See literature come to life every spring at the **Books Along the Teche Literary Festival**. Self-guided James Lee Burke's Iberia maps available in English and French.



### Bunk Johnson Jazz Trail

Bunk Johnson Jazz Collection Room at the Iberia Parish Library  
445 E. Main St., New Iberia, LA 70560  
337-364-7024 • [IberiaLibrary.org](http://IberiaLibrary.org)  
By reservation for groups

Bunk Johnson was a Jazz musician who lived in New Iberia and is credited for teaching Louis Armstrong and other Jazz legends. Learn more about Bunk Johnson and his music in the historical collection hosted at the **Iberia Parish Library's** Main Branch. Visit his grave at **St. Edward's Cemetery** and attend the **Bunk Johnson Festival** held every year in the spring.



### Jeanerette Museum

500 E. Main St., Jeanerette, LA 70544  
337-276-4408 • [JeaneretteMuseum.com](http://JeaneretteMuseum.com)  
By reservation for groups; allow: 1 hour; guide available

Go back to the **Days of the Steamboat** at the Jeanerette Museum, housed in the quaint 1902 Desire Guiberteau house in the heart of Sugar City. Learn about Louisiana's sugar and cypress lumber industries, Mardi Gras, and Acadiana and local history. Discover over 40 native species in the "Swamp Room." See an old paymaster station, a two-seater outhouse, one of Jeanerette's first fire trucks, cane cutters and vintage farm equipment in the Bayou Teche annex. The Nicholas Provost Family Cemetery is located on the museum's property. History talks and other events offered year-long.



### Jeanerette Historic Trail

500 E. Main St., Jeanerette, LA 70544  
337-276-4408 • [JeaneretteMuseum.com](http://JeaneretteMuseum.com)

Take a self-guided walking tour and discover **Sugar City's** rich history on this 2.5 miles trail, which begins at the Jeanerette Museum. Download the map from [IberiaTravel.com](http://IberiaTravel.com) or pick it up at the museum or the Iberia Parish Convention and Visitors Bureau.





### Jefferson Island Rip Van Winkle Gardens

5505 Rip Van Winkle Rd., New Iberia, LA 70560

337-359-8525 • [RipVanWinkleGardens.com](http://RipVanWinkleGardens.com)

By reservation for groups; allow: 1 hour; guide available

Jefferson Island is located on a coastal salt dome and flanked by beautiful Rip Van Winkle Gardens and scenic Lake Peigneur. Lush **semi-tropical gardens** (25 acres) envelop the island's centerpiece, the **Joseph Jefferson Home**, built in 1870 by acclaimed American actor Joseph Jefferson and listed on the National Register of Historic Places. Disaster struck the island in 1980 when a rig drilling pierced one of the giant salt caverns beneath Lake Peigneur. Visitors can view a documentary on the disaster and the property's unique history, stroll the exquisitely restored gardens, tour the Joseph Jefferson Home and watch birds at **Rip's Rookery**. **Café Jefferson** is open daily for lunch.



### Wat Thammarattanaram Buddhist Temple

7913 Champa Ave., Broussard, LA 70518

337-378-9469 • [Facebook.com/Wat-Thammarattanaram](https://Facebook.com/Wat-Thammarattanaram)

By reservation; guided

The Buddhist temple sits in the heart of Lanexang Village, a Lao community located off Highway 90 in Coteau. Learn about this community's fascinating history, culture and religion. The village celebrates the **Lao New Year** every Easter weekend with a three-day festival that includes live music, a beauty pageant, parades, sand castle building, kids activities and vendors selling clothes, jewelry, music and food from Southeast Asia.



### Isle of Iberia RV Resort

911 N.W. Bypass (Hwy. 3212), New Iberia, LA 70560

337-256-8681 • [IsleOfIberia.com](http://IsleOfIberia.com)

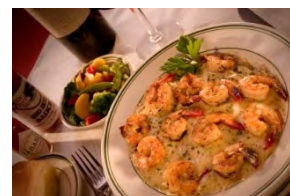
By reservation for groups

Enjoy the splash pad, lazy river and heated pool with swim up bar. Adjoining the pool area, the clubhouse has a concession stand, covered indoor/outdoor meeting areas and band/DJ stage. **SugArena**, a multi-purpose facility is located adjacent to the Isle. Day passes available.



### Culinary Experiences

People come from all over the world to experience Louisiana's unique Cajun and Creole cuisine. Enjoy Louisiana's spirit, hospitality and joie-de-vivre at one of Iberia's friendly restaurants, or take a **TABASCO® Food Tour** and sample delicacies from local establishments. Visit **Legnon's Boucherie** or our other boudin shops and take a tour of **LeJeune's Bakery** in Jeanerette where five generations of LeJeune's have been baking French bread and ginger cakes since 1884. Pick up gourmet pecans from **Cane River Pecan Co.**



## Farm Tours

Learn about raising grass-fed cattle, sustainability and nutrition at **Gonsoulin Land and Cattle** in Loreauville with custom ranch tours and field trips by appointment. Cooking demonstrations and workshops available. [GLCRanch.com](http://GLCRanch.com), 337-519-7848.

Take a guided farm tour and learn things you never knew about farming, gardening, aquaculture, cows, sheep, pigs, chicken, rabbits, geese, ducks, goats and more at **Leaning Oak Farm** in New Iberia. By reservation. [LeaningOakFarm.net](http://LeaningOakFarm.net), 337-365-9328.



Harvest your own vegetables at **Iberia Community Garden** in New Iberia, a community supported urban food farm focused on pesticide-free, bio-dynamic, and space intensive food growing practices. By reservation. [Facebook.com/IberiaGardenCoOp](https://www.facebook.com/IberiaGardenCoOp), 337-636-0790.

Tour **Eddie Romero's Fruit Orchard** and pick your own fruits from peaches to pawpaws and citrus. By reservation, 337-364-3370.

## Shopping and Art

Shopping opportunities abound in Iberia Parish, from antique shops and bookstores to art galleries, specialty shops and farmers markets. The **Da Berry Fresh Market** and **Teche Area, GLC** and **Jeanerette Farmers Markets** offer a bounty of fresh vegetables, fruits and pre-cooked items. The **Delcambre Seafood and Farmers Market** features wild-caught **Delcambre Direct** seafood and farm fresh, locally grown produce. Delcambre Direct offers consumers the ability to contact seafood producers directly to purchase fresh shrimp and other seafood as it arrives at the dock. Art lovers will enjoy **A&E Gallery**, exhibits at **Bayou Teche Museum** (George Rodrigue), **Jeanerette Museum** and the **Iberia Parish Library**, as well as **Downtown New Iberia Creative Markets** and **Shadows-on-the-Teche Arts and Crafts Fair**.



## Fishing

Cajun Country's coast is teeming with fishing opportunities for both serious anglers and recreational fishermen. There is nothing like sharing fresh fish on the grill with good friends and family. Some favorite spots include the **Atchafalaya Basin**, **Bayou Carlin Cove**, **Spanish Lake**, **New Iberia City Park**, **Lake Fausse Pointe**, **Cypremort Point**, **Vermilion Bay** and the **Gulf of Mexico**. The area offers several public boat launches and expert charter fishing services. Various community organizations also hold fishing rodeos throughout the year (see our calendar of events at [IberiaTravel.com](http://IberiaTravel.com)).



## Swamp Tours

On a swamp tour, experience the serene mystical aura of nature on nearby **Lake Martin** or in the **Atchafalaya Basin** by appointment. Some operations also offer houseboat rentals for the more adventurous explorers. Contact our welcome center for information.



### Iberia Parish Birding Trail

Explore the Iberia Parish Birding Trail in the heart of the Atchafalaya Basin, America's largest river swamp. Birding areas of interest include **Lake Fausse Pointe State Park, Jungle Gardens/Avery Island, New Iberia City Park, Jefferson Island Rip's Rookery** and **Spanish Lake**. **Lake Martin** is another beautiful habitat for wading birds, waterfowl and alligators, just outside of Iberia Parish on Hwy. 31 between Parks and Breaux Bridge. Birding guides available.



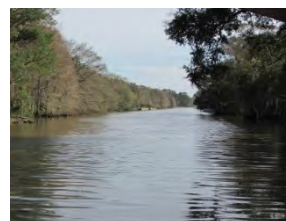
### A Day in the Park/ On the Water

The options are endless for a day in the park. Venture out to **Cypremort Point State Park** situated on the shores of Vermilion Bay, the gateway to the Gulf of Mexico. This is a great spot for sailing, picnicking and fishing, with a beach to wet your toes. A boat launch and cabins are available by reservation. **Lake Fausse Pointe State Park** lies at the edge of the Atchafalaya Basin Swamp and offers waterfront cabin rentals, camping sites, a boat launch, waterfront pavilions, hiking trails, canoe rentals and a water playground. Spend a lazy summer day in **New Iberia City Park** or **Willow Wood Park**. Amenities include walking and biking trails, playgrounds, pool, picnic areas, soccer fields, tennis courts, basketball courts, ping pong tables, recreation centers and a skate park. Launch your boat from **Loreauville's** floating dock, canoe down **Bayou Teche's National Paddle Trail** and take a break at **PJ Allain Waterfront Park and Sculptural Garden**; or launch from **Bayou Carlin Cove** in Delcambre and boat down Bayou Carlin to Vermilion Bay. Compete in **Tour du Teche** and the **Acadiana Dragon Races**.



### Atchafalaya National Heritage Area – Bayou Teche Corridor

St. Landry, St. Martin, Iberia and St. Mary Parishes make up the Bayou Teche Corridor of the Atchafalaya National Heritage Area. Explore the exotic area of rivers, bayous, swamps, wildlife, lush tropical gardens, history, music, art, world-famous cuisine and Cajun, Creole and Native-American cultures.



### Optional Tours

- The Rosary House • Episcopal Church
- Grotto of Our Lady of Lourdes • Antique Rose Ville

For itinerary planning assistance, contact:  
 Iberia Parish Convention & Visitors Bureau  
 2513 Hwy. 14 • New Iberia, LA 70560  
 337-365-1540 • 888-942-3742 • Fax: 337-367-3791

